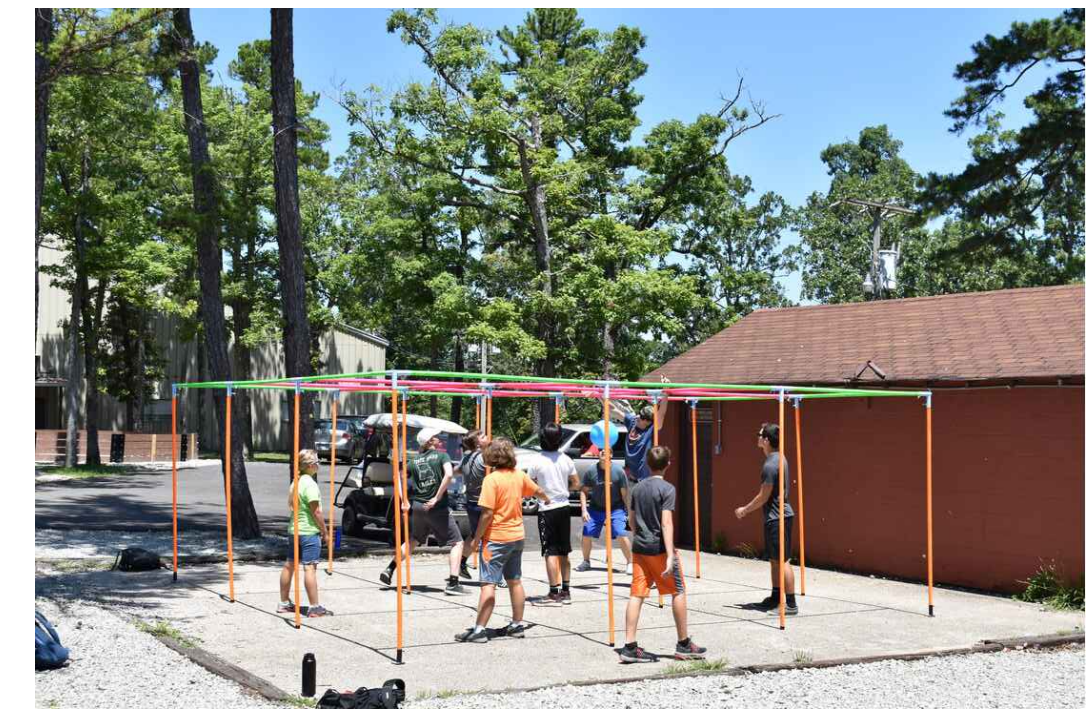


JEFFERSON ELEMENTARY CONCEPT 2



811
Know what's below.
Call before you dig.
CALL 2 BUSINESS DAYS
IN ADVANCE BEFORE
YOU DIG, GRADE, OR
EXCAVATE FOR THE
MARKING OF
UNDERGROUND
MEMBER UTILITIES

LKV
ARCHITECTS
2400 E RIVERWALK DRIVE
BOISE, IDAHO 83706
WWW.LKVARCHITECTS.COM
208.336.3443

BRECKON
INCORPORATED
• Civil Engineering
• Landscape Architecture
• Erosion & Sediment Control
• Project Cost Estimation
• Irrigation Design
• Land Surveying
www.breckoninc.com
Phone: 208-376-9933
1800 North Lincoln Street
Garden City, Idaho 83744

STATE OF IDAHO
PLATE 00000000
**PRELIMINARY
NOT FOR
CONSTRUCTION**
LANDSCAPE ARCHITECT

**Jefferson Elementary School
Addition and Remodel**
600 N. Fillmore Street, Jerome, Idaho

DATE: December 6, 2022
LKV PROJECT #: -
REVISIONS:

DRAWN BY: CP
CHECKED BY: JB

Conceptual Design

DRAWING NO.

L12